

**RESOLUTION TO ADOPT
AN UPDATED COMPREHENSIVE LAND USE PLAN
FOR THE TOWN OF WEAVERVILLE**

WHEREAS, the Town previously adopted comprehensive land use plans in 1991, 2007, 2012, and in 2019, and, beginning in 2025, undertook the work to update its comprehensive land use plan; and

WHEREAS, the resulting Comprehensive Land Use Plan outlines the technical studies that were conducted and the related findings, and establishes general goals, priorities and guidelines for the implementation of land use policy within the Town; and

WHEREAS, upon its adoption, the Comprehensive Land Use Plan shall be an advisory document which is consulted for all land use policy initiatives, and as required by law, so that land use decisions are not arbitrarily and capriciously made, but are reasonable and in the public interest; and

WHEREAS, the Planning Board was active its review and drafting of the Plan and, with a unanimous vote, the Planning Board recommends it for adoption; and

WHEREAS, on April 27, 2026, Town Council held a public hearing on the proposed updated Comprehensive Land Use Plan after proper notice was advertised; and

WHEREAS, Town Council now wishes to adopt the 2026 Comprehensive Land Use Plan;

NOW, THEREFORE, BE IT RESOLVED BY THE TOWN OF WEAVERVILLE, NORTH CAROLINA, ACTING THROUGH ITS COUNCIL MEMBERS, that the Weaverville Town Council hereby adopts the attached **COMPREHENSIVE LAND USE PLAN**, effective immediately, repealing and replacing the Comprehensive Land Use Plan adopted in 2019.

ADOPTED this 27th day of April, 2026.



GARY D. LAWRENCE, Mayor

ATTEST:



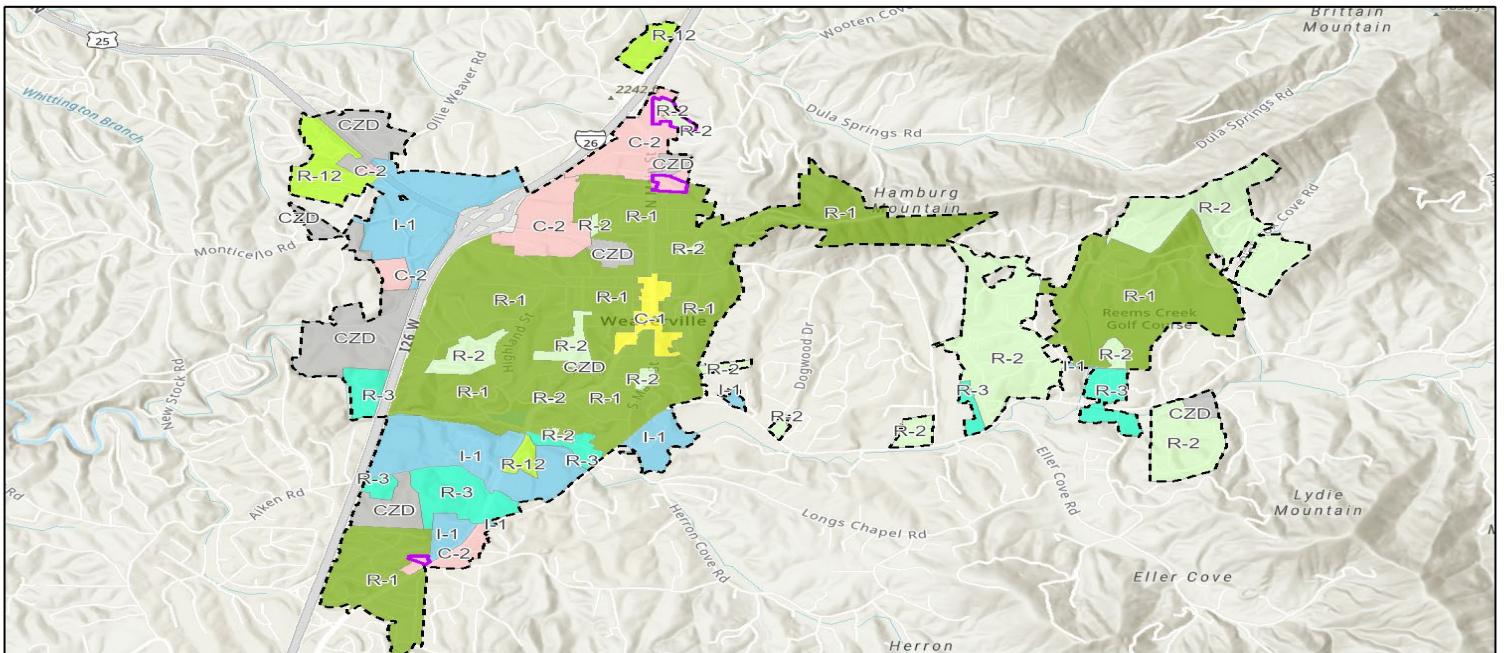
TAMARA MERCER, Town Clerk

COMPREHENSIVE LAND USE PLAN

Town of Weaverville

2026-2031

Town of Weaverville Zoning



2/26/2026, 8:52:23 AM

- Weaverville Town Limits
- Manufactured Home Overlay District
- Weaverville Zoning General
- C-1
- C-2
- I-1
- R-1
- R-2
- R-3
- R-12
- CZD
- World_Hillshade

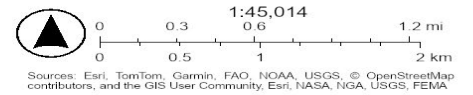


TABLE OF CONTENTS

INTRODUCTION	4
NEED FOR A COMPREHENSIVE LAND USE PLAN.....	4
USE OF A COMPREHENSIVE LAND USE PLAN.....	5
ADOPTION OF THE PLAN.....	5
STUDIES AND STAFF ANALYSIS	6
TOWN FACILITIES AND SERVICES.....	6
GROWTH PRESSURES.....	7
Population and Development Projections.....	7
Resolution Regarding Growth Areas.....	7
AdventHealth Hospital Campus.....	8
Large-Scale Residential Development.....	10
Demand for Multifamily Housing.....	10
Reems Creek Corridor Growth.....	11
Impact of Growth on Buncombe County Schools.....	12
Commercial/Industrial Development.....	12
INFRASTRUCTURE EXPANSION	13
Town Water System Capacity and Distribution.....	13
Metropolitan Sewerage District Capacity and Availability.....	13
Public and Private Road Policy.....	14
PARKS AND RECREATION	14
Reems Creek Greenway.....	15
Active Weaverville Bicycle and Pedestrian Plan.....	16
STATUTORY LIMITATIONS	17
Satellite Annexation.....	17
Down Zoning.....	18
MISCELLANEOUS	19
Hazard Mitigation and Helene Recovery.....	19
Town Geographic Information System (GIS).....	20
PUBLIC INPUT	21
CITIZENS’ SURVEY AND INPUT SESSION RESULTS ON COMPREHENSIVE LAND USE PLAN.....	21
GUIDANCE FOR LAND USE DECISIONS	35
USE CATEGORY DESCRIPTIONS.....	35
FUTURE LAND USE MAP.....	36

ZONING MAP 36
RESOLUTION REGARDING GROWTH..... 36
TABLE OF STATED GOALS, RESPONSIBILITIES, AND PRIORITIES..... 37
OTHER ADOPTED PLANS, STUDIES, INFORMATION..... 37
ACKNOWLEDGEMENTS 38

